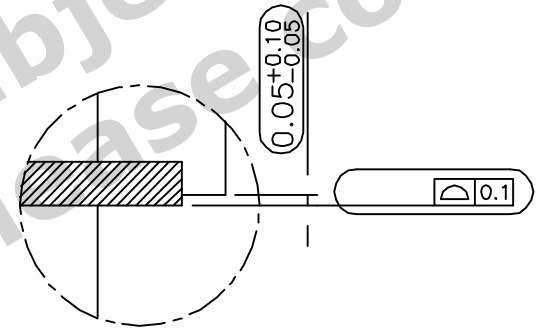
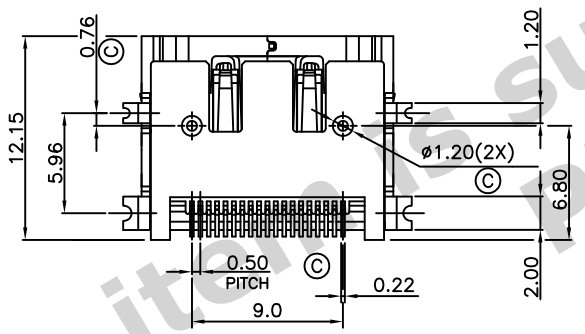
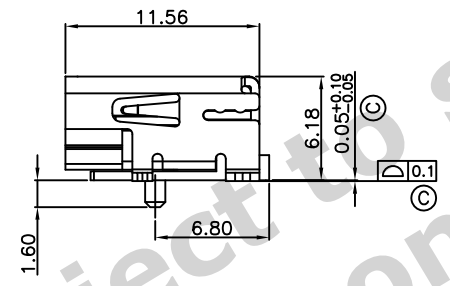
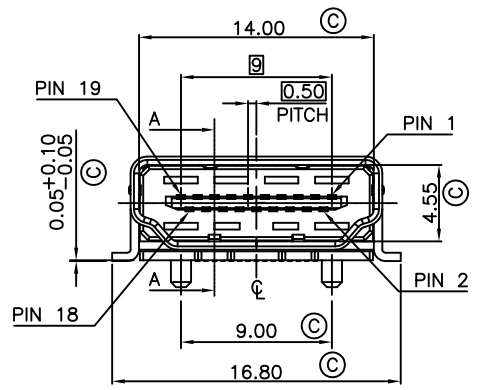


RECOMMENDED PCB LAYOUT (THICKNESS=1.6±0.15mm)

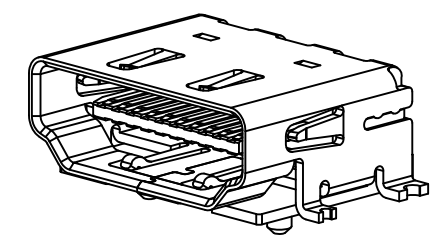


SECTION A-A

- Material and Finish:
1. Insulator Material: L.C.P.+30% Glass Filled, UL94V-0, Color: Black
 2. Contact Material: Brass(C2680-EH), t=0.2mm
 3. Shell Material: Brass(C2680 1/2H), t=0.5mm
 4. Contact Area Plated: 15u" Gold For One Side Plated Over 50u" Nickel
 5. Solder Area Plated: 100u" Tin Plated For Double Sides Over 50u" Nickel
 6. Shell Plated: 100u" Nickel Plated
 7. Current Rating: 0.5 Amp Min.
 8. Insulation Resistance: Unmated: 100 Mohms Min. Mated: 10 Mohms Min.
 9. Contact Resistance: 10 mohms Max.
 10. Dielectric Withstanding Voltage: 300V AC
 11. Operation Temperature: -55°C to +85°C
 12. Control Dimensions Indicated From (C)

PRODUCT NUMBER:
206A-S A B N
1 2 3 4

1. Solder Tail Type
S: SMT Type
2. Contact Plating
A: 15u" Gold Plating
3. Metal Shell Type
B: SMT Metal shell
4. Shell Plating
N: Nickel plated



						UNLESS OTHERWISE SPECIFIED TOLERANCE				
						ANGLES	ANG.	±5°		
						LINEAR	0.	±0.3		
							0.00	±0.25		
						SCALE	AS SHOWN	UNIT: mm		
						DRAWN	Willis	2012/10/19	DRAWN NAME:	
						CHECKED	Angel	2012/10/19	HDMI Connector With Peg, Solder Tail: SMD Type, Shell: SMD Type	
						APPROVED	Ken	2012/10/19	PRODUCT NO.	206A-SABN
REV.	DESCRIPTION	DATE	REV.	DESCRIPTION	DATE	SIZE	REV.	FILE NAME		
1			4			A4	1.0	206A-SABN_B_1		