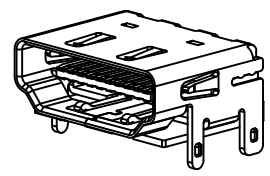
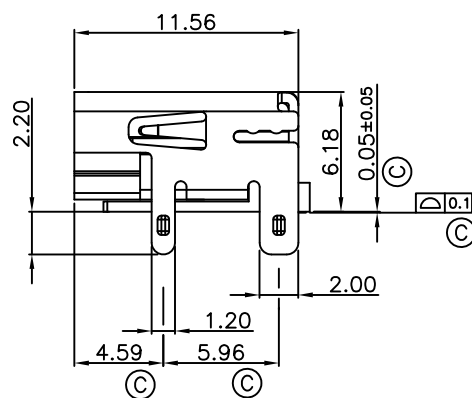
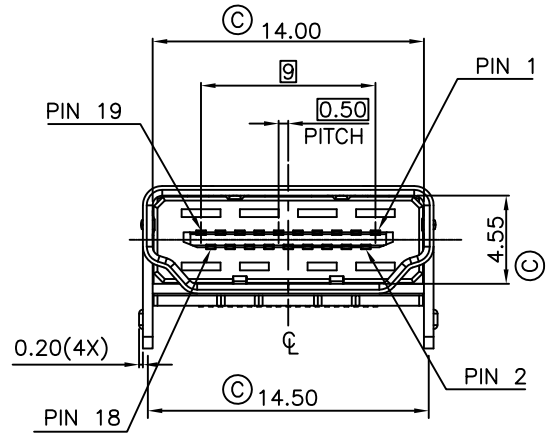


RECOMMENDED PCB LAYOUT (THICKNESS=1.6±0.15mm)



- Material and Finish:
- Insulator Material: L.C.P.+30% Glass Filled
UL94V-0,Color:Black.
 - Contact Material: Brass(C2680-EH),t=0.2mm
 - Shell Material: Brass(C2680 1/2H),t=0.5mm
 - Contact Area Plated: 15u" Gold For One Side
Plated Over 50u" Nickel
 - Solder Area Plated: 100u" Tin Plated For Double Sides
Over 50u" Nickel
 - Shell Plated: 100 u" Nickel
 - Current Rating: 0.5 Amp Min.
 - Insulation Resistance: Unmated: 100 Mohms Min.
Mated: 10 Mohms Min.
 - Contact Resistance: 10 mohms Max.
 - Dielectric Withstanding Voltage: 300V AC
 - Operation Temperature: -55°C to +85°C
 - Control Dimensions Indicated From ©

- 206A-S A A N
1 2 3 4
- 1.Solder Tail Type
S:SMT Type
- 2.Contact Plating
A:15u"Gold Plating
- 3.Metal Shell Type
A:T/H Matel shell
- 4.Shell Plating
N:Nickel plated
- PIN Signal Assignment
- TMDS Data2+
 - TMDS Data2 Shield
 - TMDS Data2-
 - TMDS Data1+
 - TMDS Data1 Shield
 - TMDS Data1-
 - TMDS Data0+
 - TMDS Data0 Shield
 - TMDS Data0-
 - TMDS Clock+
 - TMDS Clock Shield
 - TMDS Clock-
 - CEC 14 Reserved (N.C. on device)
 - SCL 16 SDA
 - DDC/CEC Ground
 - +5V Power
 - Hot Plug Detect

				UNLESS OTHERWISE SPECIFIED TOLERANCE				
				ANGLES	ANG.	±5°		
				LINEAR	0.	±0.3		
					0.0	±0.25		
				0.00	±0.20			
				SCALE	AS SHOWN	UNIT: mm		
REV.	DESCRIPTION	DATE	REV.	DESCRIPTION	DATE	SIZE	REV.	FILE NAME
1			4			A4	1.0	206A-S AAN_B_2

Revise:

DRAWN NAME: Willis
DRAWN: 2012/08/03
CHECKED: Angel
CHECKED: 2012/08/03
APPROVED: Ken
APPROVED: 2012/08/03
DRAWN NAME: HDMI Connector
Solder Tail:SMD Type, Shell:DIP Type
PRODUCT NO. 206A-S AAN